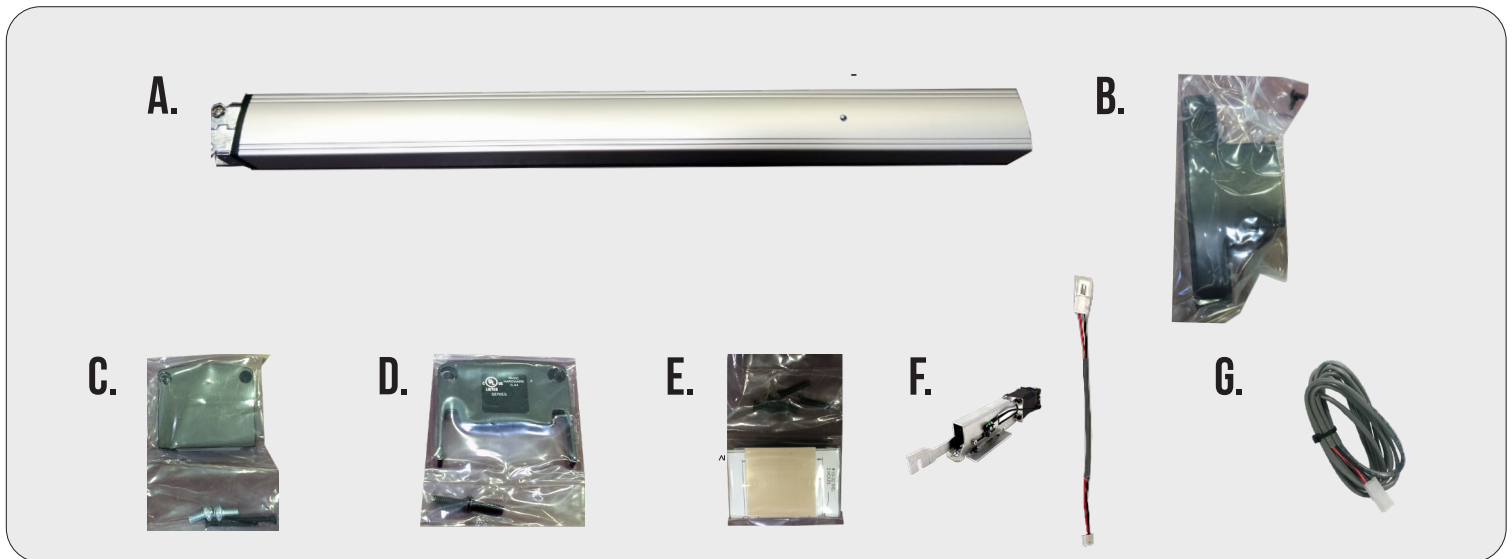


# PD 10-M-RIM PTS



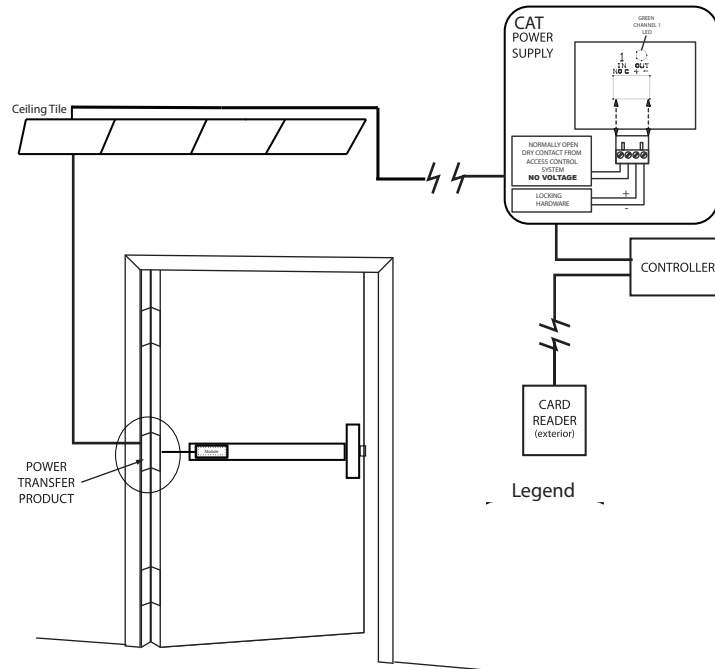
## INSERT INSTRUCTIONS

The PD10-M-RIM is a storefront grade 1 exit device equipped with motor drive latch retraction. Retrofits Doromatic 1790 & First Choice 3790.



## KIT INCLUDES | TOOLS REQUIRED

- |    |                                      |   |                    |
|----|--------------------------------------|---|--------------------|
| A. | Head Cover pack                      | • | Cordless Drill     |
| B. | RIM Exit Device                      | • | Needle nose Pliers |
| C. | Hinge Stile End Cap pack             | • | Measuring Tape     |
| D. | Lock Stile End Cap pack              | • | 1/2 Drill bit      |
| E. | Rim Strike pack                      |   |                    |
| F. | MOTOR KIT - Installed in exit device |   |                    |
| G. | 1- 50944 Molex Pigtail               |   |                    |
| H. | 1- 50030 8' Lead w/ VD Connector     |   |                    |



**PTS VIDEO**

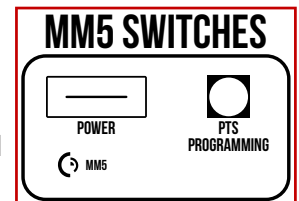


## SETTING PUSH TO SET (PTS)

**\*\*IMPORTANT INFO\*\***

**MAKE SURE TO SET PTS BEFORE FINISHING INSTALLATION**

- STEP 1 -** To enter PTS mode: Depress MM5 button & apply power. The device will emit 1 SHORT beep. The device is now in PTS mode.
- STEP 2 -** While depressing the push pad, apply power. (i.e. presenting the credential to the reader).
- STEP 3 -** Continue to keep pad depressed, the device will emit 1 LONG Beep. After the beep has stopped, release the pad and now the adjustment is complete. test the new location, If not to your liking repeat the 3 steps.

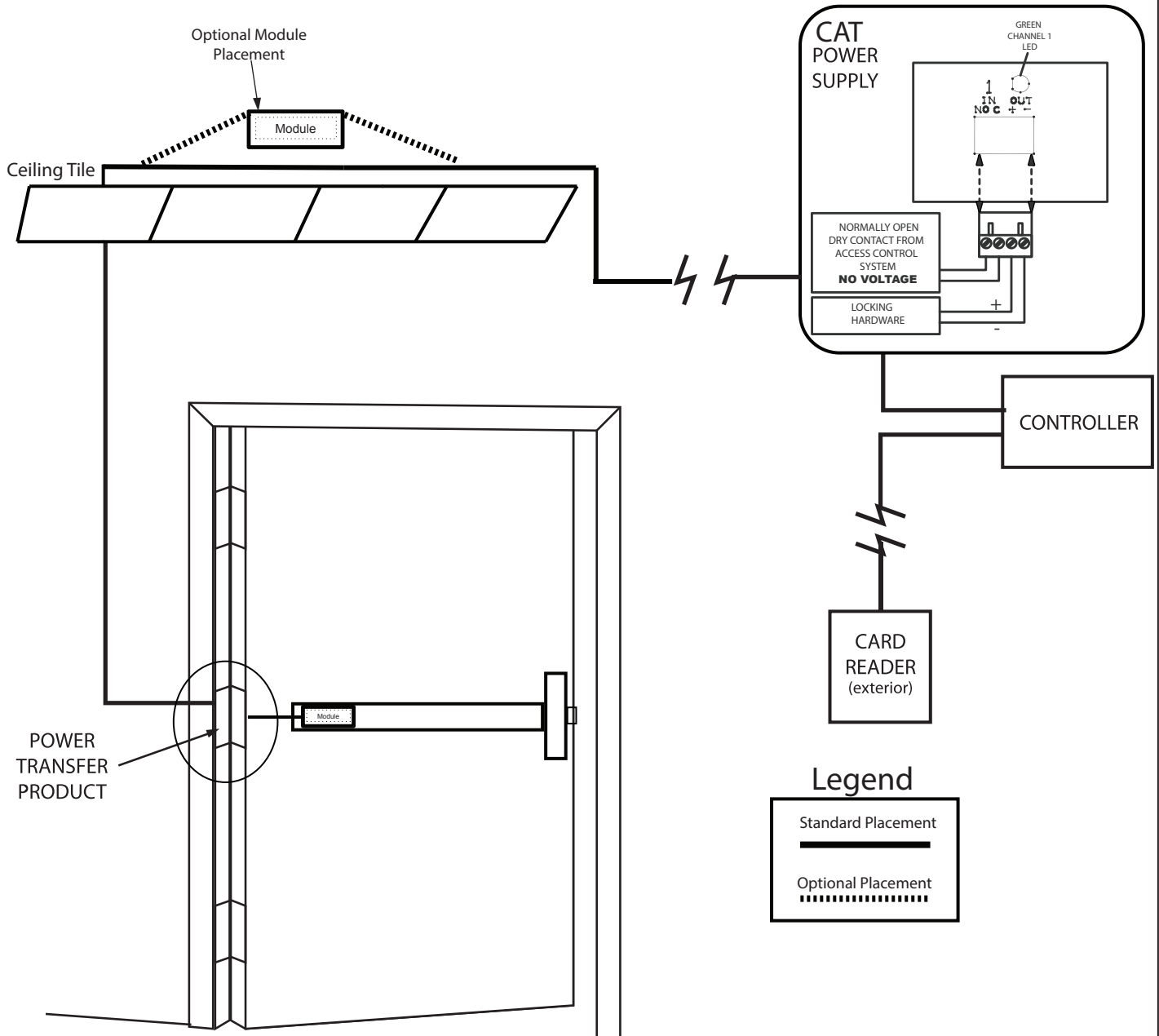


## TROUBLESHOOTING & DIAGNOSTICS

BEEPS	EXPLANATION	SOLUTION
2 Beeps	Over Voltage	> 30V unit will shut down. Check voltage & adjust to 24 V.
3 Beeps	Under Voltage	< 20V unit will shut down. Check voltage & adjust to 24 V.
4 Beeps	Failed Sensor	Verify all 3 sensor wires are installed correctly. Replace sensor if problem persists by contacting office.
5 Beeps	Retraction or dogging failure	After 1st fail: 5 beeps then immediately attempts to retract again. After 2nd fail: 5 beeps with pause in-between for 30 seconds then device attempts to retract again. After 3rd fail: 5 beeps every 7 minutes, device will not attempt to retract. To Reset: Depress bar for 5 seconds at any time.

# ELECTRIFIED EXIT DEVICE

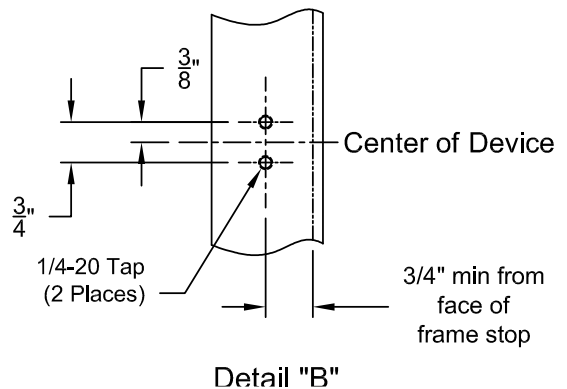
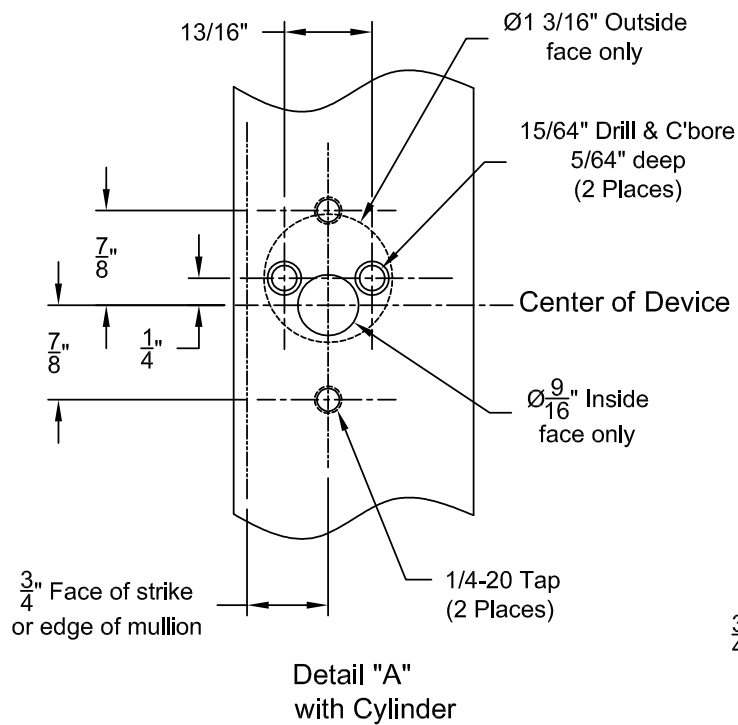
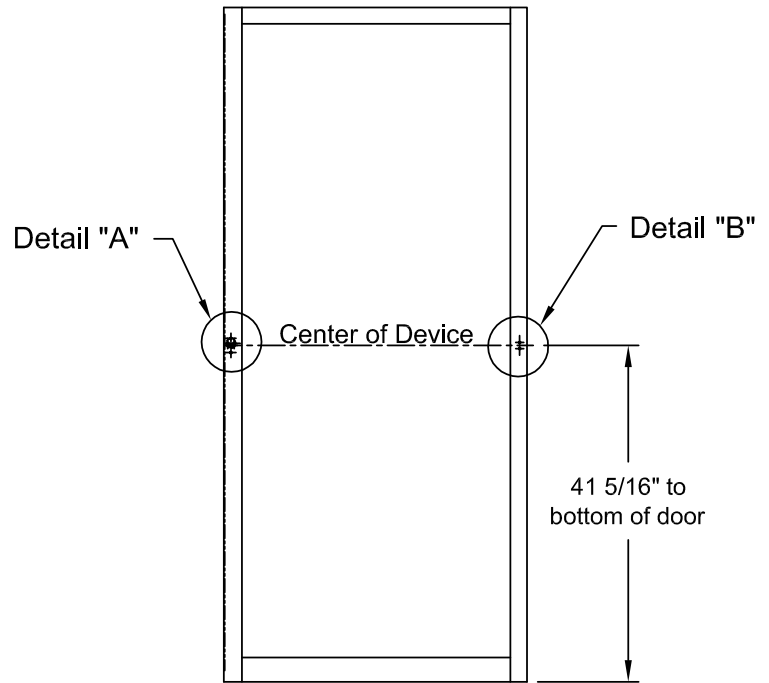
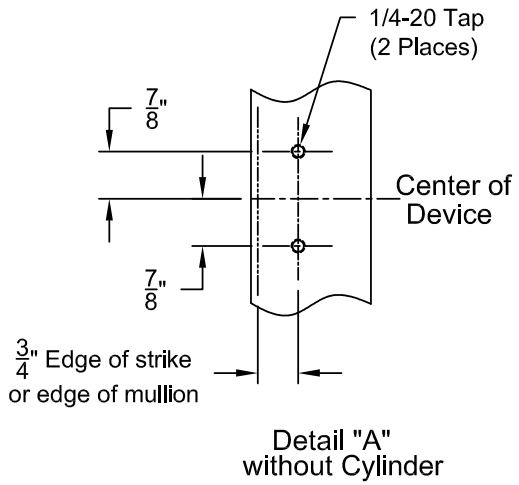
## INSTALLATION EXAMPLE



# RIM PANIC

## Installation Template

All prep is shown on interior side of the door, except where noted.  
Right hand door shown. (LHR)

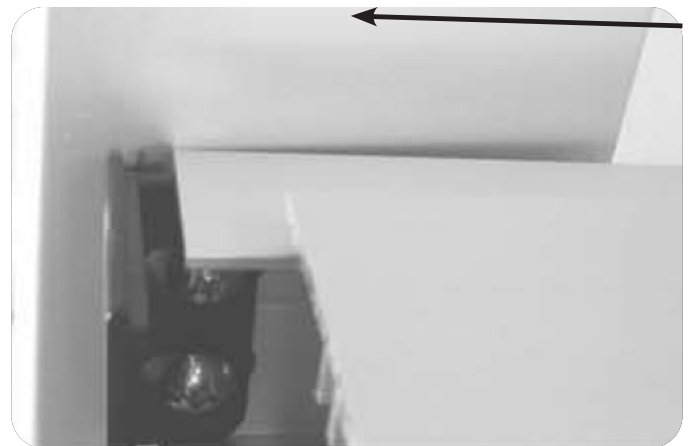


## **STEP 1 - MOUNT EXIT DEVICE**

- A. INSTALL THE STILE MOUNTING BRACKET WITH 2 EA. 1/4-20 X 1/2 PAN HEAD SCREWS. LEAVE SPACE TO CAPTURE THE BASE OF THE DEVICE. (SEE NEXT SLIDE)



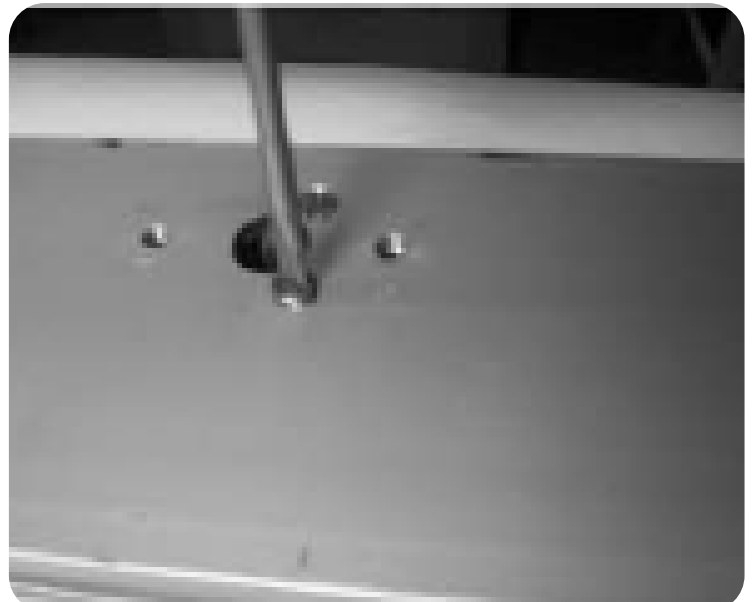
- B. SLIDE THE END OF BASERAIL UNDERNEATH THE MOUNTING BRACKET.



## **OPTIONAL STEP - INSTALLING CYLINDER**

- A. INSTALL TRIM CYLINDER TAIL PIECE SO THAT IT IS SLIGHTLY BELOW THE FACE AFTER MOUNTING.

INSTALL KEY CYLINDER USING MOUNTING SCREWS SUPPLIED WITH CYLINDER. (SCREWS MAY NEED TO BE SHORTENED.)

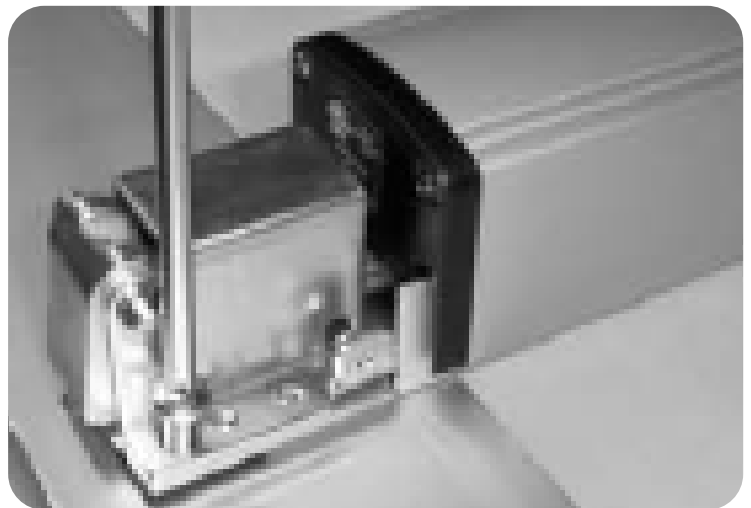


- B. -FOR NIGHT LATCH, LEAVE SET SCREW IN PLACE.  
-HOLD BACK FUNCTION IS DESIRED, REMOVE THE SET SCREW TO ALLOW ADDITIONAL ROTATION OF CYLINDER TAILPIECE.



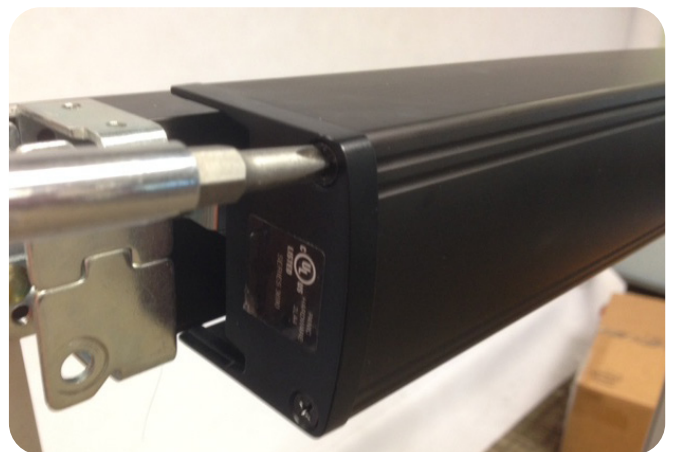
## **STEP 1B - CONTINUED**

- A. ATTACH HEAD OF DEVICE TO STILE WITH 2 EA. 1/4-20 X 3/4" SCREWS. TIGHTEN SCREWS ON THE HEAD AND BASE OF THE DEVICE.

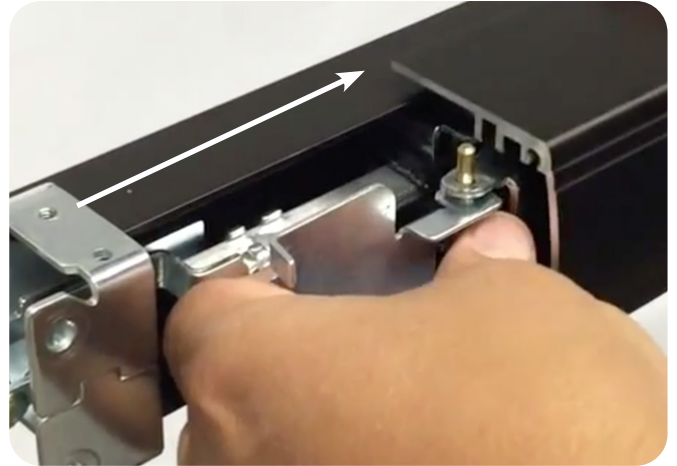


## **STEP 2 - DRILL WIRE CHASE**

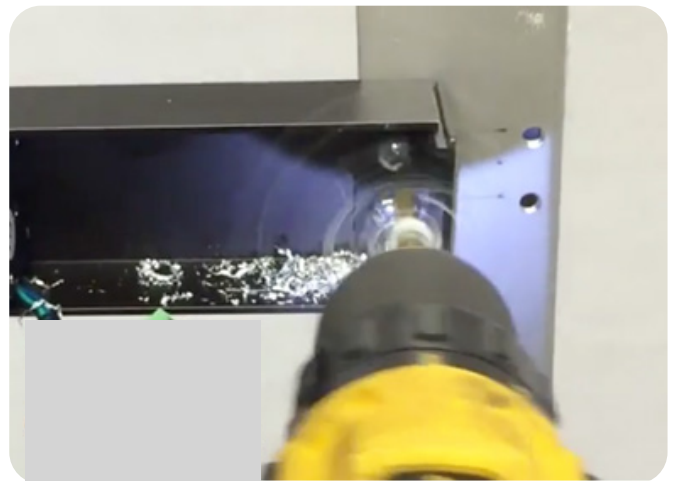
- A. REMOVE LOCK STILE END CAP.



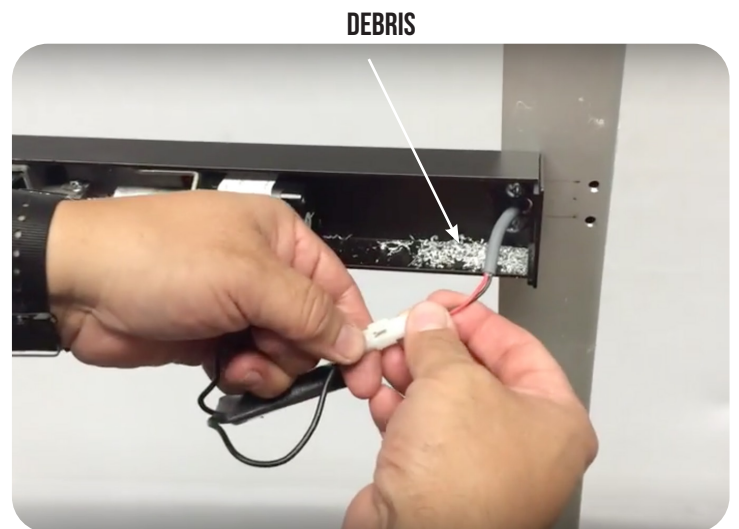
B. SLIDE PUSH PAD OFF OF BASERAIL.



C. DRILL THE HOLE FOR OUR 2 PIN POWER LEAD IN-BETWEEN THE 2 MOUNTING SCREWS.



D. FEED THE 2 PIN POWER LEAD INTO THE HOLE AND CONNECT TO OUR MM4 MODULE. ALSO, MAKE SURE TO CLEAN OUT ANY DEBRIS LEFT.



Note: Depending on where your power transfer is; next you would fish the other side of the power lead we connected to the MM4 and hook up to your incoming power. If you have a portable tester this would be a good time to test fire the motor.

- E. REPLACE PUSH PAD, MAKING SURE THE ACTIVATING BRACKETS AND PINS SLIDE THROUGH THE 3RD CHANNEL.



- F. REINSTALL THE LOCK STILE END CAP.



## **STEP 3 - Install Head & End Cap**

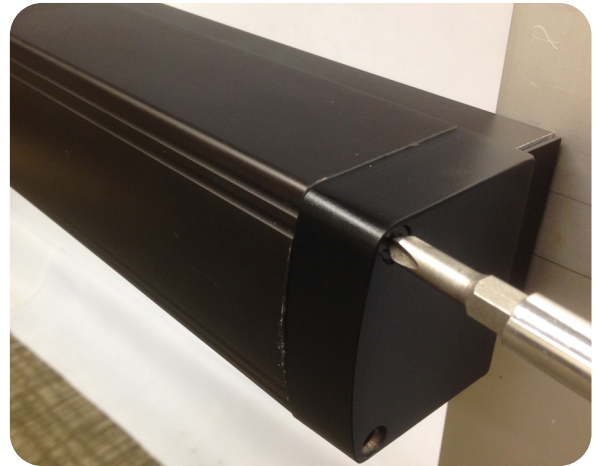
- A. INSTALL HEAD COVER WITH 2 EA. 10-32 X 3/8 SCREWS.





- B. INSTALL HINGE STILE PUSH PAD COVER WITH 2 EA. 8-32 X 1 1/2" SCREWS. NOW YOU SET YOUR LATCH RETRACTION ADJUSTMENT WITH OUR "PTS" TECHNOLOGY.

SEE PAGE #2



## **STEP 4 - INSTALL DOOR FRAME STOP**

- A. INSTALL THE ROLLER STRIKE WITH 2EA. #10-32 X 1" SCREWS SO THE ROLLER IS FLUSH WITH THE FRAME STOP. (USE STRIKE SHIM FOR 5/16" STOPS.)

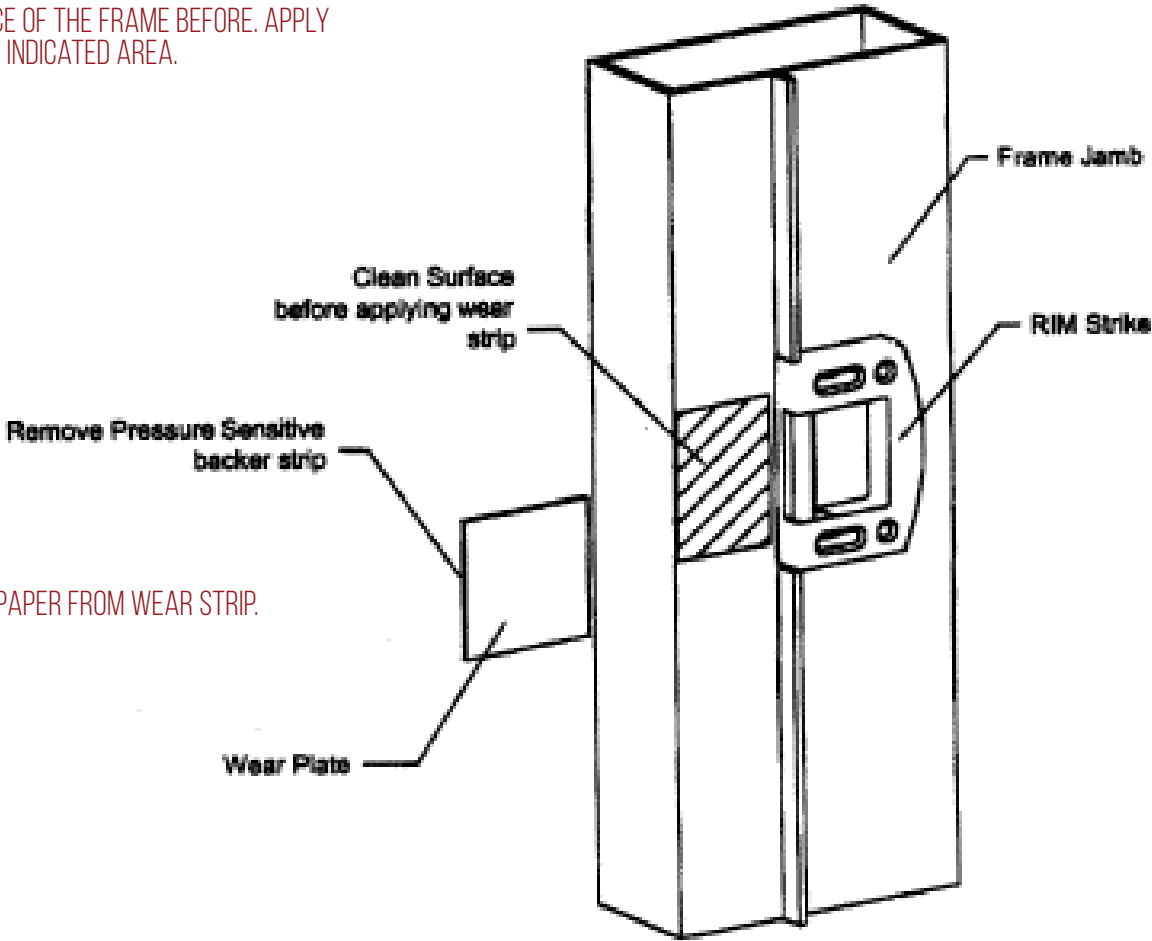


- B. USING THE ROLLER STRIKE AS A TEMPLATE, DRILL AND TAP REAR MOUNTING HOLES. INSTALL REMAINING 10-32 X 1" MOUNTING SCREWS AND TIGHTEN ALL SCREWS.



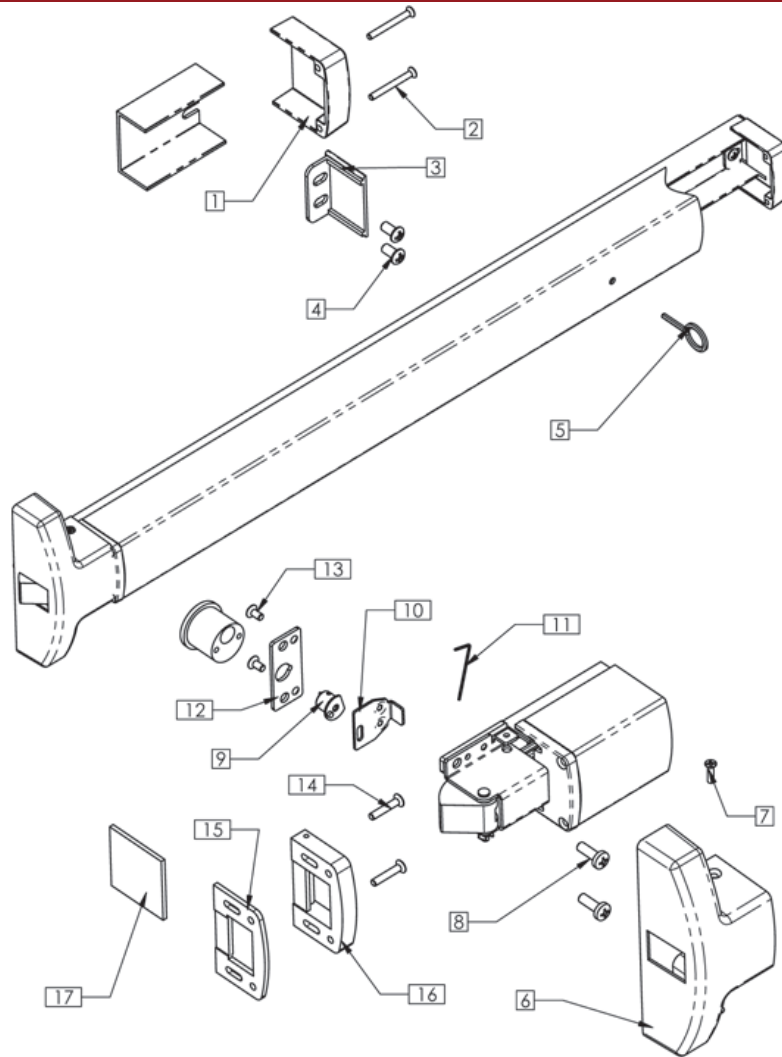
# STEP 5 - INSTALL WEAR STRIP

- A. CUT WEAR STRIP TO DESIRED LENGTH.
- B. CLEAN SURFACE OF THE FRAME BEFORE. APPLY WEAR STRIP IN INDICATED AREA.

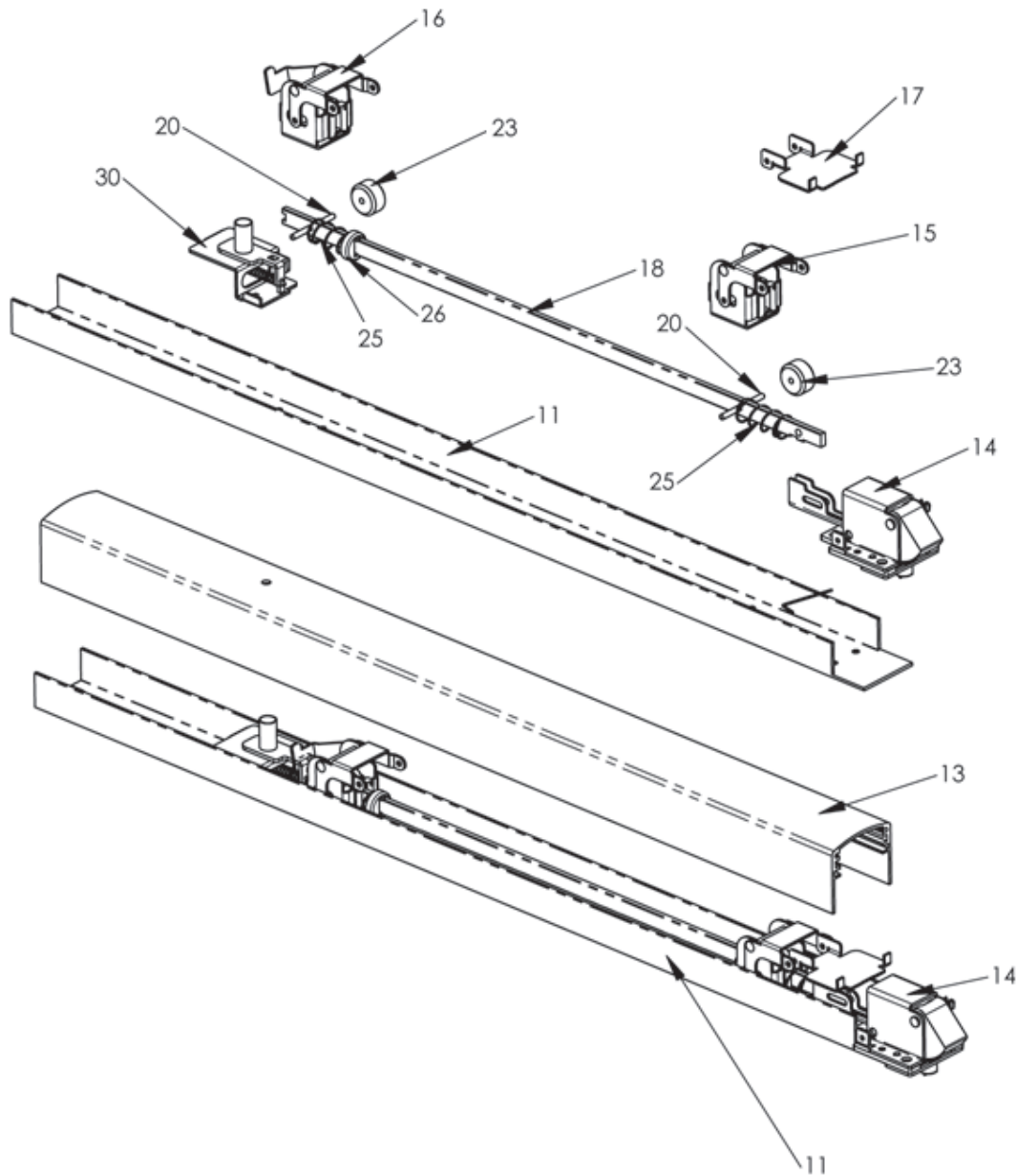


- C. PEEL BACKER PAPER FROM WEAR STRIP.
- D. APPLY WEAR STRIP FLUSH TO FRONT OF FRAME JAMB IN INDICATED AREA.

# PD10 PARTS BREAKDOWN



<b>Reference Number</b>	<b>Description</b>	<b>Part Number</b>	<b>Quantity Per Device</b>
1	Hinge Stile Push Bar End Cap	30	1
2	End Cap Screw	802	2
3	Channel End Cap	33	1
4	Hinge Stile Mounting Screws	801	2
5	Dogging Key	819	1
6	Center Cover	40A	1
7	Cover Screw	804	2
8	LS Mounting Screws	826	2
9	Cylinder Cam	9039	1
10	Retractor	35	1
11	Allen Wrench	825	1
12	Cam Spacer Plate	31	1
13	Spacer Plate Screws	M817	2
14	Stike Mounting Screw	836	4
15	Strike Shim	17001423	1
16	Strike Assy.	17001A05	1
17	UHMD Wear Strip	17001288	1



<b>Reference Number</b>	<b>Description</b>	<b>Part Number</b>	<b>Quantity Per Device</b>
S1	Hinge Stile Activating Bracket	71	1
S2	Lock Stile activation Bracket	9034	1
S3	Push Bar Bracket	15	1
S4	Push Bar Axle Pin	16	2
S5	Roller Stop	17	2
S6	Spring	23	2
S9	Spring Cap	24	1
S10	Activating Connecting Rod	21	1
S11	Rim Latch Bracket Assy.	9032	1
S12	Dogging Kit	71	1