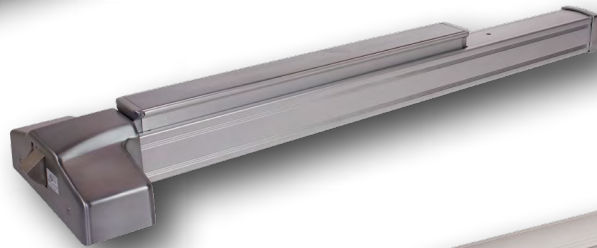
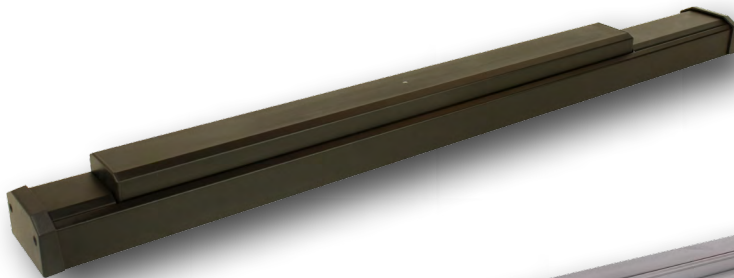


## Modification Only Brands



## The easier and more affordable solution

Our electrified latch pullback modification of architectural & storefront exit devices allow for remote keyless access control in high occupancy/high traffic conditions where exit devices are required. Common applications include conditions such as hospitals, airports, schools, churches and they are commonly specified in applications that require automatic door openers. These devices may be continuously energized allowing for a push/pull condition if desired. They are available as a solenoid or motor driven latch retraction.

**U.S. Customer Support**  
**1-888-622-2377**

**Visit our website for more details**  
**[www.CommandAccess.com](http://www.CommandAccess.com)**

**Canada Customer Support**  
**1-855-823-3002**



## Models Available

**MDLP**

Fail Secure 24 volts. Electric latch pullback modification of customer's device.

### BRANDS MODIFIED:

- AHT 8000/9000 (Motor)
- Cal Royal 2200 (Solenoid)
- Cal Royal 7700 series (Motor)
- Dor-O-Matic 1690/1790 (Solenoid & Motor)
- First Choice 3690/3790 (Solenoid & Motor)
- Hager 5000 series (Solenoid)
- Jackson 1285/1295 (Motor)
- Precision 2000 series (Solenoid)

### FEATURES:

- High-Performance quality solenoids designed for demanding applications
- Includes the patented PM300 interface power modules programmed to maximize the efficiency and life of the solenoid.
- Extended duration latch pullback capability for "continuously on" conditions
- The "local boost" design allows for centralized power supplies and extended wire runs up to 700' with 18/2 wire
- Six foot power cable with quick connect for PM300 or MM module
- Electric Dogging of push pad included
- 3-year "no hassle" warranty

### OPTIONS:

- REX - Request to Exit switch available factory installed
- \*\*\*REXKIT-ED - Field Installable Request to Exit kits available
- LBM - Latch Bolt Monitor switch available (factory installed only)
- Power Supply requirements vary. Please consult factory for specific power supply applications. With the exception of a few models, most devices will utilize the following: PS1 for single door or two door simultaneous operation, PS2/PS2BB for up to two independently operated doors, PS5-8 for up to eight independently operated doors

### SPECIFICATIONS:

- Operating Voltage - 22-30 VDC
- Solenoid - Current Peak: 1.5 A Current Hold: 250 mA
- Motor - Current Peak: 1 A Current Hold: 125 mA

### MAXIMUM WIRE RUNS:

- 700' with 18ga wire
- 1000' with 16ga wire
- 1250' with 14ga wire
- 1500' with 12ga wire

Model No.	Notes:		
Customer:	Job No./Name:	Date:	Provided by: