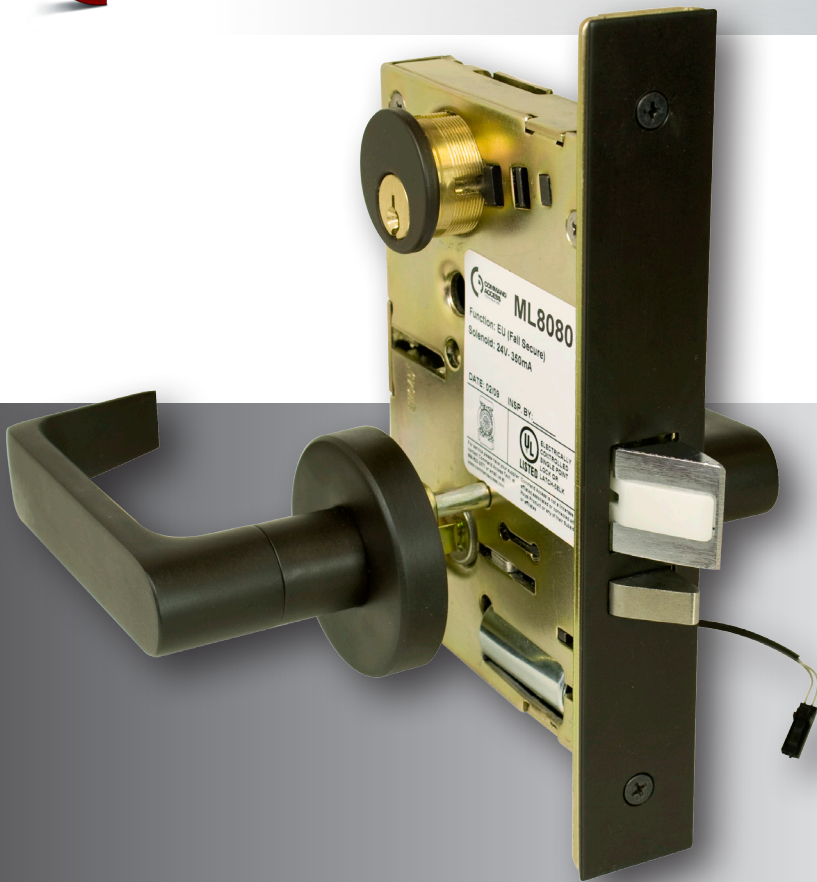




ELECTRIFIED MORTISE

Cal Royal "M" Series
(modified by Command Access)



- ***Grade 1***
- ***UL Listed***
- ***12 or 24 VDC***
- ***Low Current Draw***
- ***3-Year Warranty***

The Professional's Choice

The Command Access electrified Cal Royal "M" series mortise lock line allows for remote keyless access and egress control for heavy use applications where security and safety is critical. These locks may be purchased as complete locks or as modifications only (add MD prefix for modification only of customers' M8080 lock bodies). Along with the styles and finishes listed, we offer multiple functions and voltages to meet your requirements. Common applications include stairwell doors, lobby entrances, computer rooms, classrooms, interior and exterior doors.

U.S. Customer Support
1-888-622-2377

Visit our website for more details
www.CommandAccess.com

Canada Customer Support
1-855-823-3002